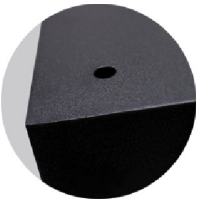
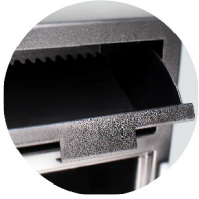


MFL2731E

MFL SERIES CASH MANAGEMENT BUSINESS SAFES



SPECIFICATIONS

EXTERIOR [HWD]	INTERIOR [HWD]	INTERIOR [CU.FT.]	SHELVING [NO.]	WEIGHT
27 1/4" x 30 3/4" x 21"	LEFT COMPARTMENT: 16 1/8" x 15 3/4" x 18" RIGHT COMPARTMENT: 27" x 14 1/2" x 18"	6.7	LEFT: 1 RIGHT: 2	250 lbs

SAFE FEATURES

BODY & DOOR

- All steel construction
- 1/2" thick solid steel door
- 5 Massive 1" diameter solid steel locking bolts per door
- Left compartment stores deposits
- Right compartment does not have access to the deposits
- 3 high strength adjustable/removable shelves

- Front loading mail box style deposit door accepts large deposits
- Anti-fish baffle helps prevent fishing through the deposit door
- Full length solid steel dead-bar
- Heavy-duty solid steel hinges
- 4 Pre-drilled anchor holes [Anchor Kit included]

LOCK

- Lock protected by a drill resistant hard plate & punch-activated relocking system
- Battery operated electronic locks [9V Batteries included]
- Programable 01-59 minute unlocking time-delay
- Optional 2 user code entry system
- 1 Manager code & up to 5 user codes
- Mutiple invalid code defense feature

LOCK OPTIONS



MESA
SAFE COMPANY

BETTER MESA SAFE THAN SORRY!™